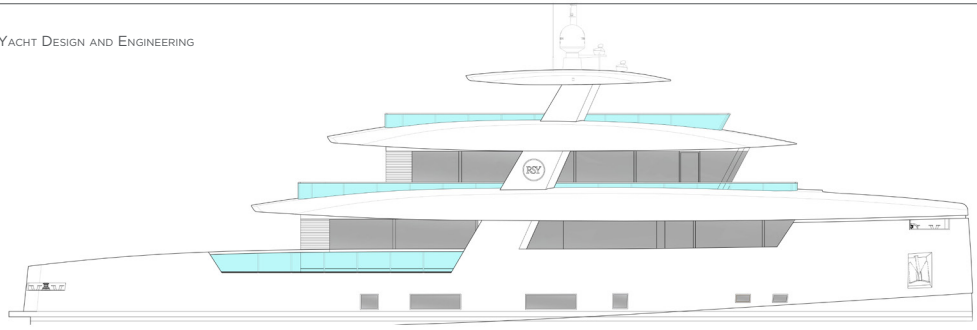
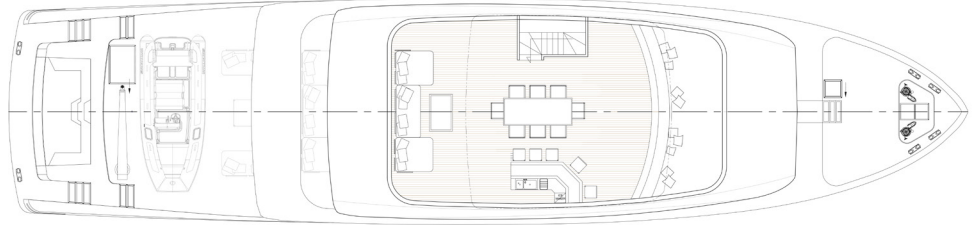


35M SUPPLY VESSEL YACHT CECCARELLI YACHT DESIGN AND ENGINEERING
 TECHNICAL DATA

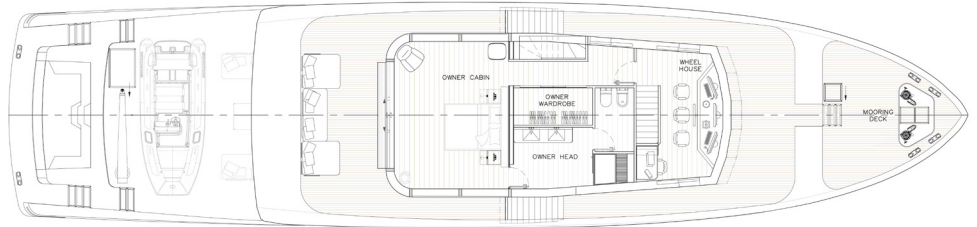
PROFILE



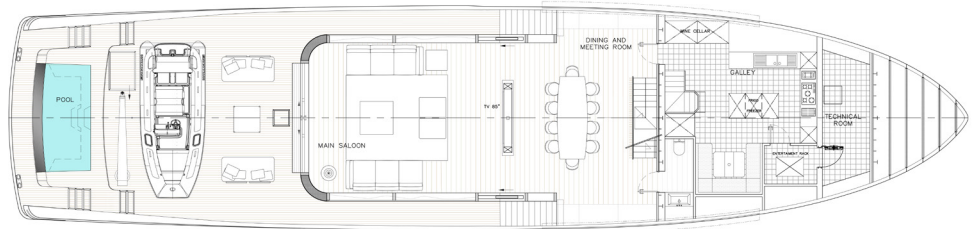
SUN DECK



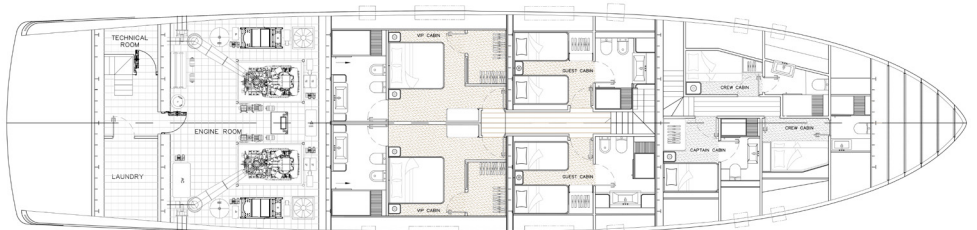
UPPER DECK



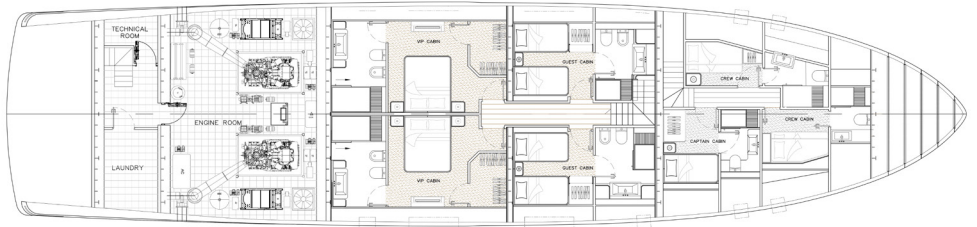
MAIN DECK



LOWER DECK
 OPTION A



LOWER DECK
 OPTION B



ENGINES	2 X MAN D2868 735 kW 2300rpm 2 X ZF W 650 reduction gears	2x735 kW 2x1000 HP
SPEED	Maximum speed	14 knots
	Cruising speed	10 knots
RANGE (Nautical Miles)	Autonomy at 10 knots	4.700 n.m.
MAXIMUM NUMBER OF GUESTS ON BOARD	10	

MAIN SIZES	LoA: Length overall	35,00 m	114 ft 10 in
	Lwl: Waterline Length	34,00 m	111 ft 7 in
	Maximum Beam	8,25 m	27 ft 1 in
	Depth	4,10 m	13 ft 5 in
	Moulded draft	2,25 m	7 ft 5 in
	Gross tonnage	310	GRT

CERTIFICATION RINA C, \otimes HULL, \bullet MACH, Y, Short Range, LY3 compliant

The Technical data, performances, designs and graphic reproductions are purely indicative, are not contractual, shall not constitute in any circumstances whatsoever any contractual offer by the shipyard and refer to European standard models of motor yachts built by the shipyard. The only valid technical reference or description is the specific parameters of each motor yacht cited only on purchase of the same. Therefore the only indications binding on the seller are contained solely in the Contract and in the relevant Technical Specification.