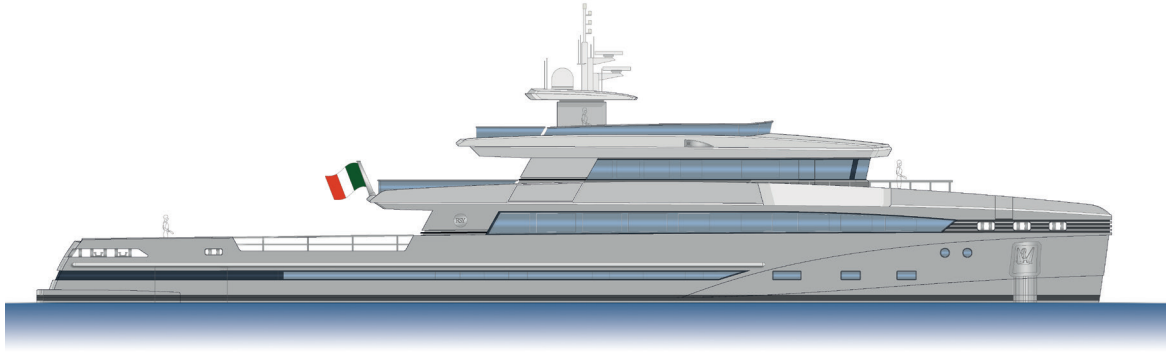


SUPPLY VESSEL 48M DESIGN STUDIO SPADOLINI
 TECHNICAL DATA

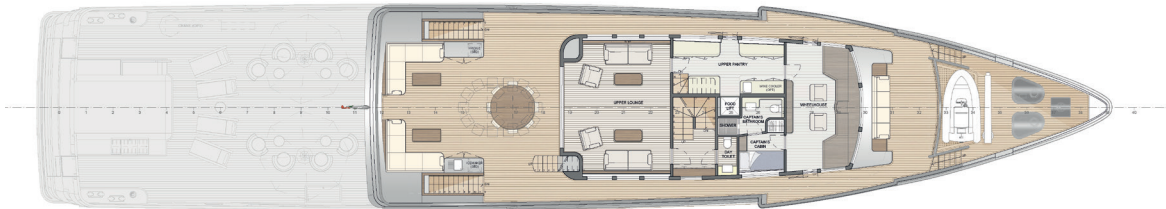
PROFILE



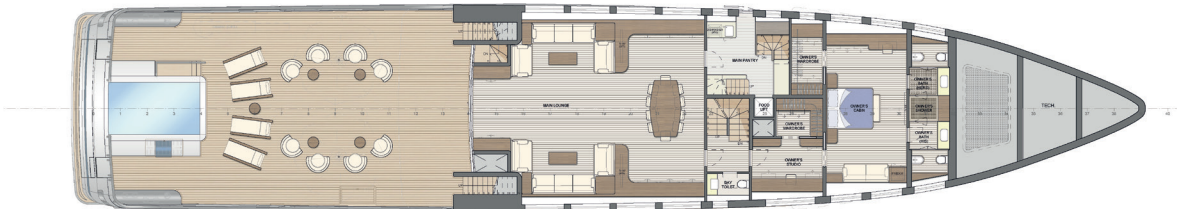
SUN DECK



UPPER DECK



MAIN DECK



LOWER DECK



ENGINES	2 x MTU 12V2000M72, 1080 kW 2250rpm 2 x gearboxes ZF 3350 ratio 5,00:1	2.160 kW	2937 HP
SPEED	Maximum speed	16 knots	
	Cruising speed	14 knots	
RANGE (Nautical Miles)	Autonomy at 10 knots	4.200 n.m.	
MAXIMUM NUMBER OF GUESTS ON BOARD		10	

MAIN SIZES	LoA: Length overall	48,00 m	157 ft 6 in
	Lwl: Waterline Length	46,50 m	152 ft 7 in
	Maximum Beam	9,25 m	30 ft 4 in
	Depth	4,50 m	14 ft 9 in
	Moulded draft	2,50 m	8 ft 2 in
	Gross tonnage	499	GRT

CERTIFICATION RINA C, ❖ HULL, ❖ MACH, Y, unrestricted navigation

The Technical data, performances, designs and graphic reproductions are purely indicative, are not contractual, shall not constitute in any circumstances whatsoever any contractual offer by the shipyard and refer to European standard models of motor yachts built by the shipyard. The only valid technical reference or description is the specific parameters of each motor yacht cited only on purchase of the same. Therefore the only indications binding on the seller are contained solely in the Contract and in the relevant Technical Specification.